



Quick Start Guide

WS200AM



For customer support,
scan the QR code.
Para atención al cliente,
escanee el código QR.
Pour le support client,
scannez le code QR.

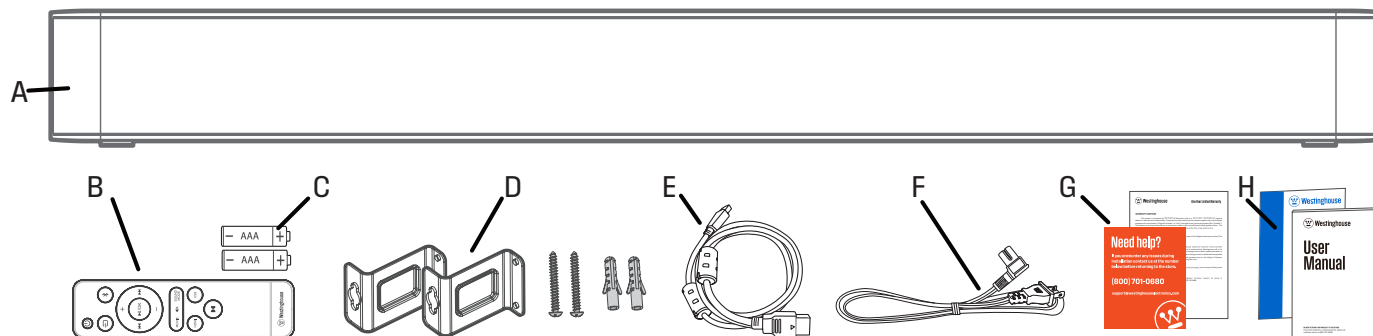
Tools you will need:



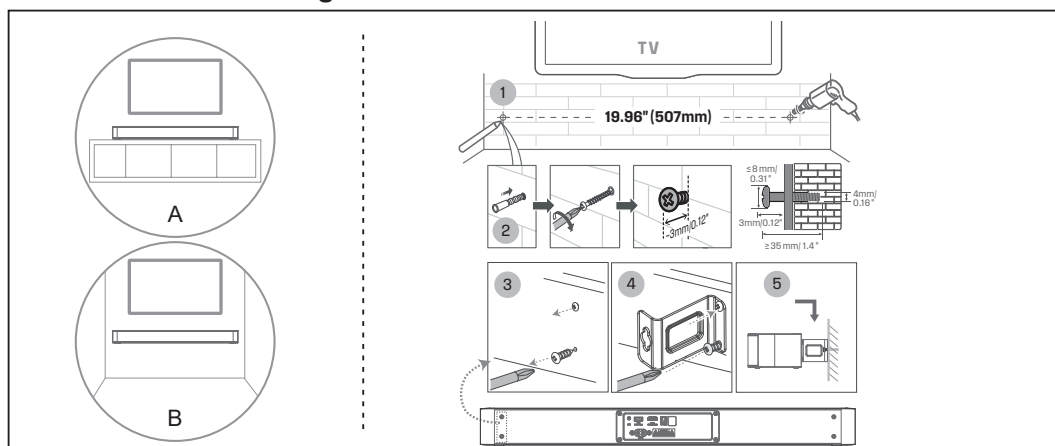
ASSEMBLY / MONTAJE / ASSEMBLAGE

What's included

- A - Sound Bar x 1
- B - Remote Control x 1
- C - AAA Batteries x 2
- D - Wall Mount Kit x 1
- E - HDMI Cable x 1
- F - AC Power Cord x 2
- G - Warranty Card / Tech Support Card
- H - Quick Start Guide / User Manual



Placement and Mounting



- ✓ Simple setup
- ✓ One remote
- ✓ Quick settings



Trademarks

Roku, the Roku logo, Roku TV, Roku TV Ready, and the Roku TV Ready logo are trademarks and/or registered trademarks of Roku, Inc.

This product is Roku TV Ready-supported in the United State. Countries are subject to change. For the most current list of countries in which this product is Roku TV Ready-supported, please email rokutvready@roku.com.

Dolby, Dolby Atmos, and the double-D symbol are registered trademarks of Dolby Laboratories Licensing Corporation. Manufactured under license from Dolby Laboratories. Confidential unpublished works. Copyright © 2012-2024 Dolby Laboratories. All rights reserved.

The terms HDMI, HDMI High-Definition Multimedia Interface, HDMI trade dress and the HDMI Logos are trademarks or registered trademarks of HDMI Licensing Administrator, Inc.

The Bluetooth® word mark and logos are registered trademarks owned by Bluetooth SIG, Inc. and any use of such marks by Westinghouse is under license. Other trademarks and trade names are those of their respective owners.

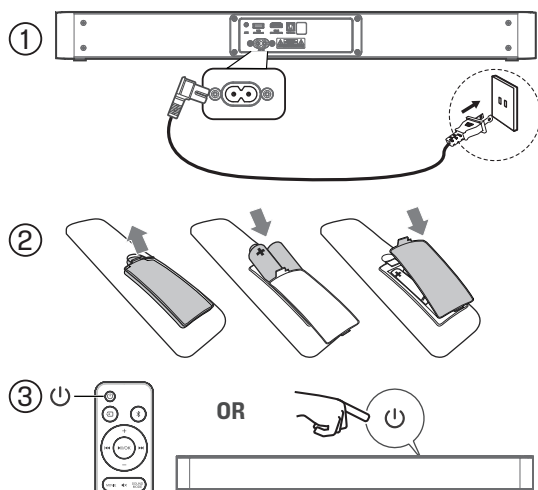
Questions? Call (800) 701-0680 or
visit westinghouse.com/support

¿Tiene preguntas? Llame al (800) 701-0680 o visite westinghouse.com/support
Des questions? Téléphoner au (800) 701-0680 ou visitez westinghouse.com/support

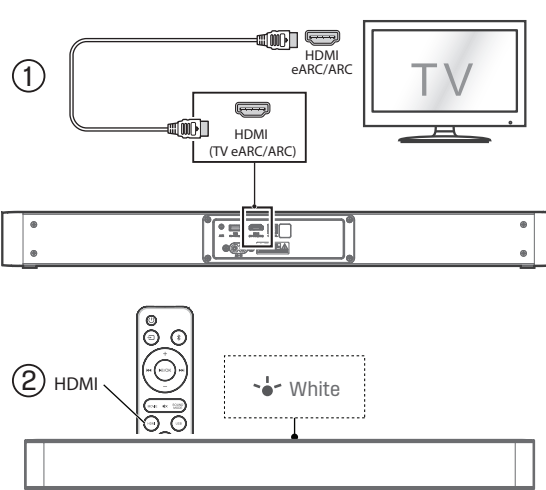
ASSEMBLY / MONTAJE / ASSEMBLAGE

Use your Sound Bar

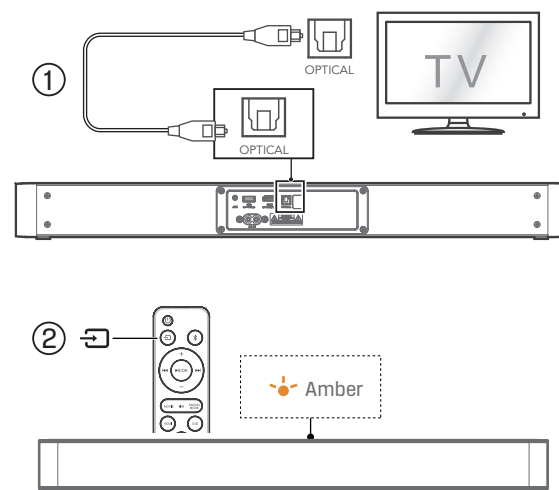
Standby/ON



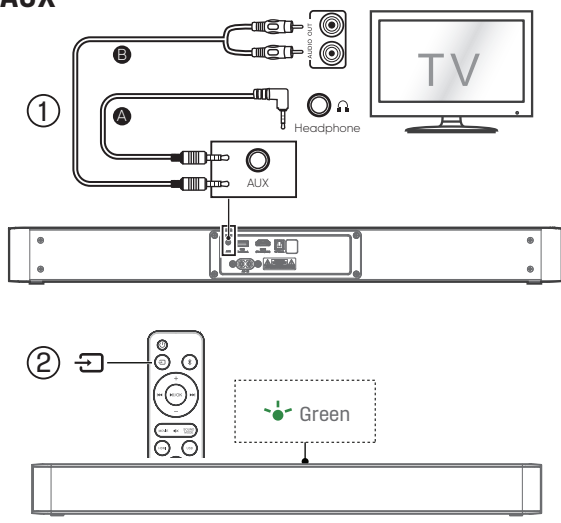
HDMI eARC/ARC



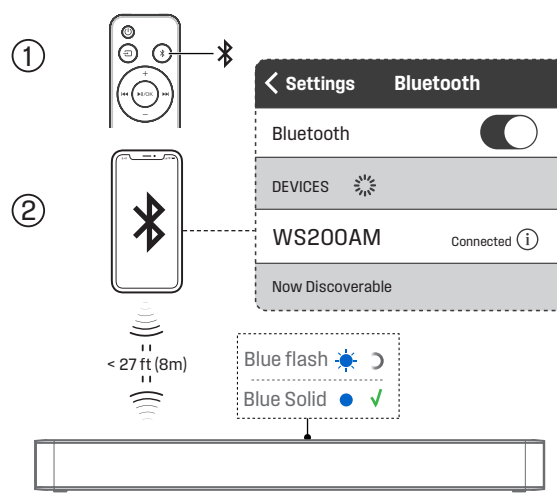
OPTICAL



AUX



Bluetooth



USB

